



# SCHSM

Southern California Home Shop Machinists

April 3, 2015

## OFFICERS

President Michael Vulpillat  
Vice President Paul Chretien  
Secretary Ken Rector  
Treasurer Jim Endsley

## COMING EVENTS

Picnic  
June 13  
Alondra Park  
3850 W Manhattan Beach Blvd.

Antique Gas and Steam  
Engine Museum Expo  
June 20, 2015  
Vista

July Meeting  
July 11, 2015 <----  
2:00 P.M.  
El Camino College

August Meeting  
August 1, 2015  
2:00 P.M.  
El Camino College

WEME show  
August 21-23, 2015  
Alameda Co Fairgrounds  
Pleasanton CA

The June monthly meeting of the Southern California Home Shop Machinists convened at 2:00 P.M. on June 6th, 2015 in classroom

AJ18 of the Industry and Technology Building at El Camino College in Torrance California. There were 34 members attending with no new visitors.

## Picnic

This is the month of our annual club picnic which will be held on Saturday, June 13th in Alondra Park. The address of the park is 3850 W. Manhattan Beach Blvd, Lawndale. Our picnic area is in the north east corner of the park on Manhattan Beach Blvd, adjacent to the east edge of the golf course. There is a parking lot next to our area and there is street parking on the boulevard.

People can begin gathering at 10:00 AM. There are picnic tables with benches in the park but you can bring your favorite chair to set up under a shady tree if you like. You may bring a cooler with water or soft drinks if you like.

Member are urged to bring a display of their craftwork whether it is a metal working project or not. The picnic offers a chance for everyone to gather for a social occasion and to chat about their projects.

Lunch will be at 12:00 P.M. President Michael Vulpillat has planned an appetizing menu of sandwiches and pizza.

Jim Long has generously offered to bring his generator to power the air compressor so there will be air for running engines. There will be an engine performance contest and a top spinning contest.

## Antique Gas and Steam Engine Museum Show

Jim Endsley has completed arrangements for our display at the Antique Gas and Steam Engine Museum Exhibition in Vista on Saturday, June 20th. Members attending our booth will receive free parking and admission to all the exhibition

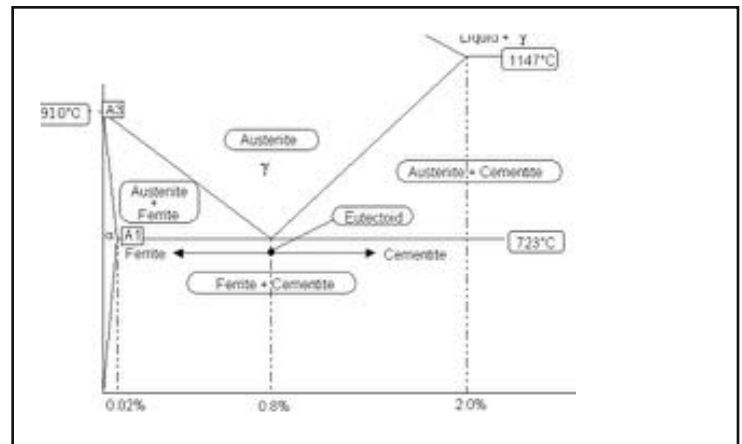
displays and activities. We will have several display tables in one of the buildings with access to electricity to power our compressor. The museum opens for exhibitors at 8:00 A.M. that day. Members are encouraged to bring an example of their work to show and provide some publicity for our club. Contact Jim for more information.

## New Business

To begin the meeting, our faculty sponsor, Ed Hoffman spoke about campus rules and access. The doors at the IT building are normally locked on weekends during the summer so it may be difficult to gain entry for the July and August meetings. The solution is that a note will be posted at the north west entry with a phone number you can text to to get attention of the Robots Club guys and they will come and let you in. Entry will only be through the north west door.

This is a 100% smoke free campus. There is no smoking anywhere on the campus, even in outdoor spaces. And especially not in the boys bathroom. There are security cameras everywhere on campus, indoors and out.

There will be major construction on the north side of the campus beginning in August. The Shops building will be demolished and the building west of it will be renovated. The area will be fenced off and some access routes onto campus may be blocked. You will be able to enter via the handicap parking access road just west of the Planetarium building. There may be less parking available along Manhattan Beach Boulevard. If you must park in the neighborhood north of the boulevard be careful of street permit parking areas and watch for permit only signs.



## July Meeting

Note that the July meeting has been rescheduled to July 11th this year to avoid the July 4th holiday.

## Heat Treating Presentation

The main presentation of the afternoon on heat treating tool steel was given by President Michael Vulpillat. Michael accompanied his talk with 27 slides illustrating the topics and presenting graphs of important relationships in the heat treat processes. Michael introduced the various tool steels available to the home shop machinist and their applications. He showed a phase diagram describing the different phases of steel at varying temperatures and carbon content. This chart is used to ascertain the temperature necessary to heat treat the material. He described the steps to condition steel, annealing, normalizing, hardening and tempering. Following hardening, steel is quenched to reduce its brittleness and make it suitable for use in its application. Michael described the various methods and quenching mediums. Michael concluded with a description of practical heat treating methods, heating implements for hardening and tempering, color charts to ascertain temperature and a color photograph of a heated bar. Michael's power point presentation aids can be found in the files section of the Yahoo group.

## Show and Tell

During the Show and Tell portion of the meeting Larry McDavid spoke about the KBC Tools and

Machinery store in Fullerton. He told about their reasonable prices and availability and passed around their latest catalog. Larry also brought in a large number of small brushes from his surplus stock which he distributed to members. Thank you Larry.

Pat Dobbins showed her latest Stuart steam engine acquisition. This is a very small engine of the same design as the larger engines she has shown previously.

You editor showed some rough examples of his experiments in metal spinning. He was introduced to the effectiveness of metal spinning in the home by a previous presentation some years ago by Larry McDavid and Eldon Barclay, and an example project by Bernie Wasinger.

## WEME Show

The Bay Area Engine Modelers club, BAEM, is hosting the seventh Western Engine and Model Exhibition (WEME). This exhibition will take place in the Agricultural Building during the GoodGuy's 25th West Coast Nationals, August 21 - August 23, 2015 at the Alameda County Fairgrounds, Pleasanton, CA. The Bay Area Engine Modelers club and other Model Engineers will exhibit all types of Model Engineering, including model steam engines, locomotives, internal combustion engines, Stirling engines, tanks, tether cars and aircraft engines. Your Editor is planning on attending the show with Vice President Paul Chretien, again this year as representatives of the SCHSM. We will have a couple of tables for display with our club banner, handouts and cheery faces to greet the thousands of people who usually attend the Good Guys car shows. Many of these people are quite interested in our display and some of them come from Southern California so it is to our benefit to show them what we are doing and to acquaint them with our club. It is also to our benefit to be friends with the guys from the BAEM club. They are a very active club with lots of interests and very friendly and supportive of the SCHSM. I'd like to encourage our members to consider coming to Pleasanton for a few days in August to participate in the exhibit and to show their stuff to an appreciative audience. If you can't come in person, please consider sending some examples of your work for us to display. They will be well cared for.



## Old Business

The club welcomes presentations by members or guest speakers on any subject related to metal working activities. If you have some knowledge or experience you feel may be of interest to our members, or if you know someone that may have something interesting to relate, please consider making a presentation at a meeting. Presentations may be a little longer and more detailed than a show and tell and may be accompanied by slides or video, or physical displays. Probably every member has some experience they can share and this is the purpose of the SCHSM. Please contact President Michael Vulpillat to make arrangements to give a presentation.

The SCHSM meets in class room AJ18 on the first floor of the Industry and Technology building of El Camino College, 16007 Crenshaw Blvd. Torrance California, at 2:00P.M., on the first Saturday of every month. The building is near Parking Lot B. Enter the campus on Manhattan Beach Blvd.

If you would like to contribute an article, to this newsletter, please contact the editor, Ken Rector, via the SCHSM Yahoo Group, or at [kdrhoo@yahoo.com](mailto:kdrhoo@yahoo.com).

Find us on the web at [www.schsm.org](http://www.schsm.org).